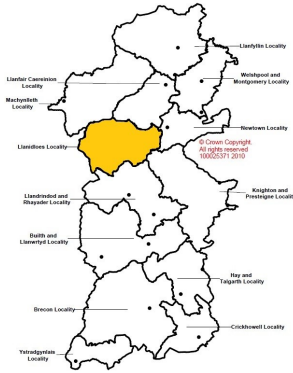


Review of Older People day time activities, Business Intelligence Insight: Llanidloes

The Community



- The current population is 6,496^{*1} and the average age of people in the locality is 46 years (Powys average 45). The population is made up of 50% Females and 50% Males
- 26.1% of the population are over 65 (Powys average is 24.6%), whilst people over 85 make up 3.3% of the population (Powys average is 3.4%). Overall the population is expected to increase by 1.8% by 2036 (from 6,566 in 2013 to 6,684; Powys average is 1.4% increase)^{*2}. In contrast, the over 85 population is expected to rise more steeply, with the population moving by 165% from 216 to 573 over the same period.

over the same period.

- Based on Dementia prevalence trends for Powys^{*3} and population distributions, it is estimated that there are around 117 people with dementia in this locality and that this will rise to 136 and then 215 by 2020 and 2035 respectively
- 10.4% (349 people) of working residents are employed in Care/Leisure industry—higher than Powys average 10.1% (500 per locality)^{*4}.
- Slightly lower than average travel time to an NHS Dentist (53 minutes, Powys Average 55 minutes) and higher than average travel time to GP surgery (52 minutes, Powys Average 50 minutes)^{*5}.
- 46% of residents in this locality feel satisfied with care for older people/the elderly (higher than Powys average of 28%)^{*6}
- 80% of residents feel satisfied that this locality is a place where people look out for and support each other (average for all Powys Localities = 81%)^{*6}
- 86% of residents in this locality say that they or a family member participate (either regularly or sometimes) in local community events and activities (higher than Powys average of 84%)^{*6}



References

1. 2014 Mid Year Population Estimates, ONS
2. 2011 based population projections for Local Authorities in Wales, Welsh Government, 2013
3. www.daffodilcymru.org.uk
4. Annual Survey of Hours and Earnings (ASHE), ONS, 2011

5. Welsh Index of Multiple Deprivation, 2011. PCC Research & information Unit Report RWIMD11/0212
6. Powys County Council Residents Satisfaction Survey, 2015

Day Care Clients

- Maes Y Wennol Day Centre is located in Llanidloes
- 68 clients were on the register (March 2016)
- 73% of clients are female
- Clients have an average age of 85 years

How do Clients Travel to PCC Day Centres?

46%

of clients use **Day Centre Provided Transport**



| Number of service users needing assistance with personal care | Number of service users needing assistance with feeding | Number of service users needing assistance to participate/interact |
|---|---|--|
| 10 | 2 | |

38%

of clients use their **own Transport**



35% of Clients have **mobility issues**



41% of Clients **Live Alone**

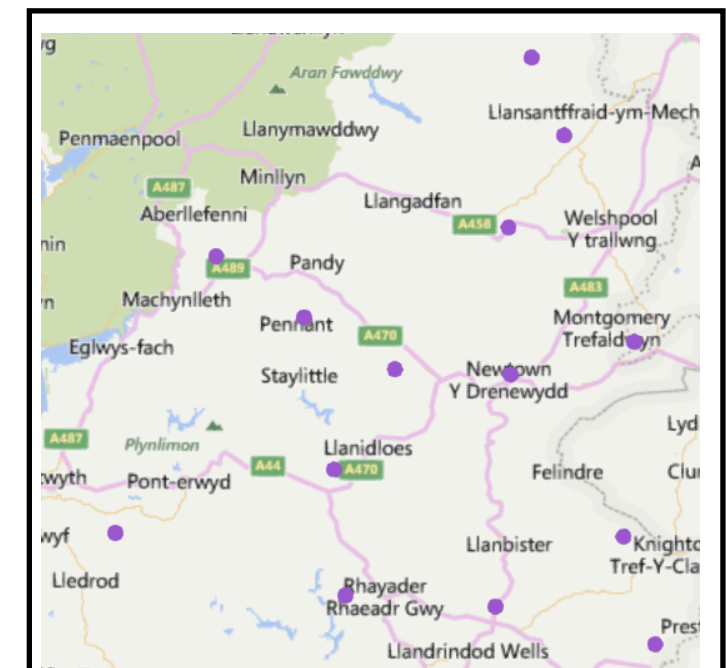
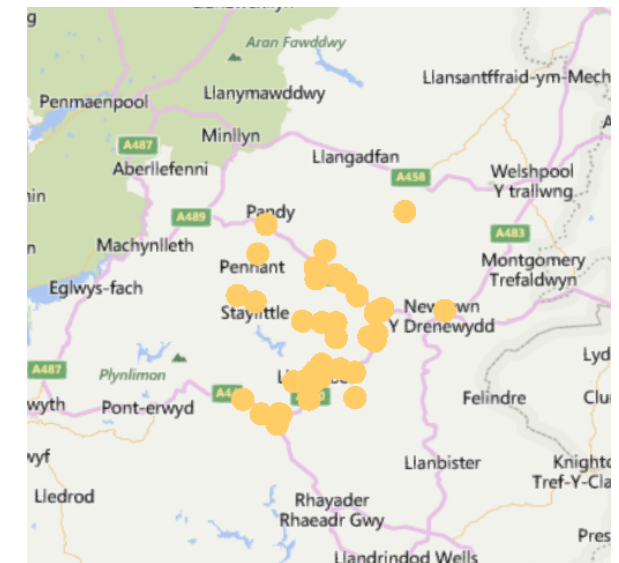
16%

of clients use **Voluntary Sector Transport**



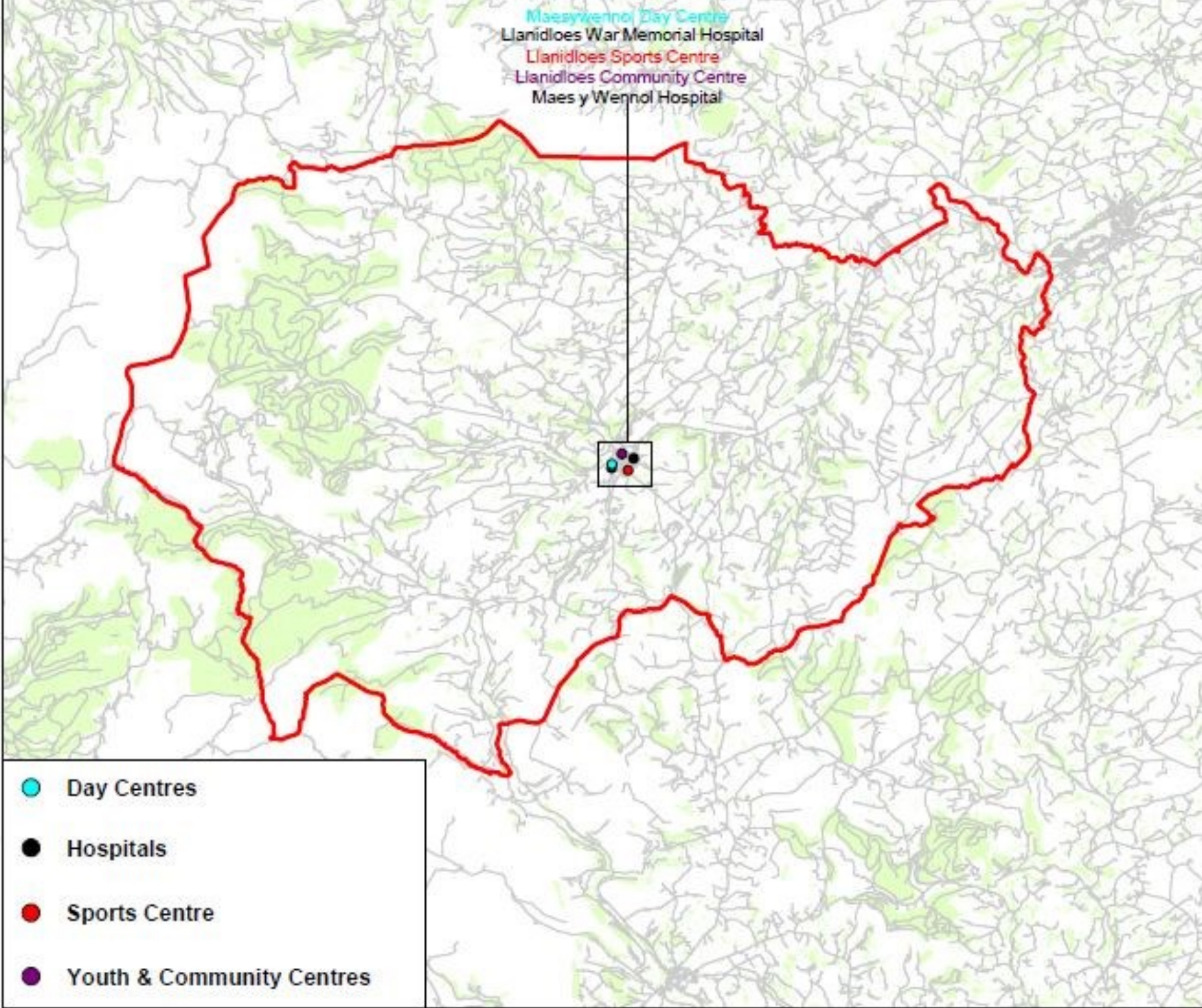
12% of Clients are **Wheelchair users**

Where do Maes y Wennol Visitors come from?



Map of Preventative Services for Adults and Older People

© Crown copyright and database rights 2016. Ordnance Survey 100005031
© Hafellniel y Gorn a hwlau corffwrdd 2016. Arddangos 100020031
Additional information © Powys County Council 2016. No additional copies should be made without the permission of the Council.
Gwybodaeth ychwanegol © Cyngor Sir Powys 2016. Ni ddylid gwmneud unrwyngolau ychwanegol heb ganiatâd y Cyngor.



LLANIDLOES AREA